

Grounding-type panel mounted receptacle

Part no. 11681

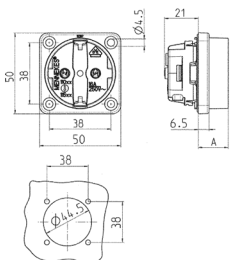


- French-belgian standard
- without hinged lid
- 3 screw terminals as connecting terminals for 1.5 - 2.5 mm²
- other colours on request

Technical specifications

Ampere	16 A
Poles	2 p+E
Voltage	230 V
Connection technology	Screw terminals
Contact	standard
Protection type	IP 20
Flange	50x50 mm
Fixing hole	38x38 mm
Weight	34 g

Drawing



Drawing 1 MB 450 Dim. in mm	Dim. A
SCHUKO	18.3
French/Belgian standards	15.8
Danish standards	15.8