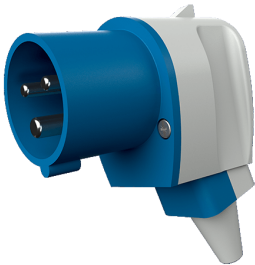


## Angled plug

Part no. 1411

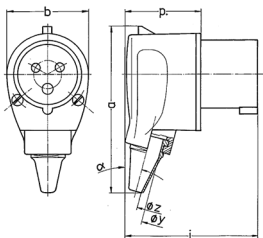


- screw terminals
- nickel plated contacts
- with grommet
- especially suited for use with receptacles of the Cepex range

## Technical specifications

Ampere	16 A
Poles	3 p
Voltage	230 V
Clock position	6 h
Hertz	50-60 Hz
Connection technology	Screw terminals
Contact	nickel plated contacts
Protection type	IP 44
Weight	115 g
Declaration of Conformity	NL,Kema, CN,CQC

## Drawing



2 MB 69	Amp.	16
	Poles	3
Dim. in mm	a	107
	b	53
	h	—
	i	85
	o	—
	p	49
	y	17.5
	z	7
	α	15°
Terminal for cond. cross		1
section (mm <sup>2</sup> ) min.-max.		—2.5