

Grounding-type panel mounted receptacle

Part no. 17064

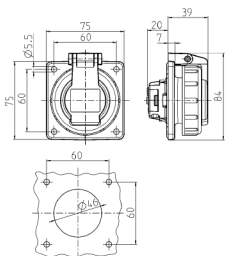


- screw terminals or plug-in terminals
- hinged bayonet lock lid
- rectangular flange
- four fixing holes

Technical specifications

Ampere	16 A
Poles	2 p+E
Voltage	230 V
Connection technology	Screw terminals
Contact	standard
Protection type	IP 68
Flange	75x75 mm
Fixing hole	60x60 mm
Weight	107 g

Drawing



Drawing
1 MB 627
Dim. in mm