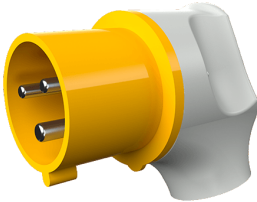


**Angled plug**  
Part no. 3312

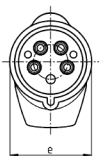
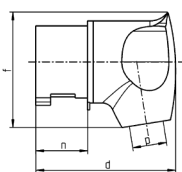


- screw terminals
- nickel plated contacts
- with grommet
- especially suited for use with receptacles of the Cepex range

**Technical specifications**

Ampere	32 A
Poles	3 p
Voltage	110 V
Clock position	4 h
Hertz	50-60 Hz
Connection technology	Screw terminals
Contact	nickel plated contacts
Protection type	IP 44
Weight	213 g

**Drawing**



2 MB 251	Amp. Poles	32		
		3	4	5
Dim. in mm	d	115	115	115
	e	72	72	72
	f	96	96	100
	n	45.8	45.8	45.8
	p	11/22	11/22	11/22