

Wall mounted receptacle

Part no. 6106

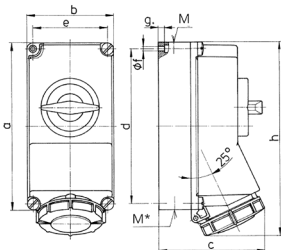


- screw terminals
- switched
- mechanical DUO-interlock
- highly heat resistant contact carrier
- nickel plated contacts
- 3 pole switch
- receptacles can be padlocked

Technical specifications

Ampere	32 A
Poles	7 p
Voltage	400 V
Clock position	6 h
Hertz	50-60 Hz
Connection technology	Screw terminals
Contact	standard
Protection type	IP 67
Enclosure material	Plastic
Weight	1306 g

Drawing



Drawing	Amp.	16	32
1 MB 382	Poles	7	7
Dim. in mm	a	225	225
	b	118	118
	c	147	153
	d	208	208
	e	101	101
	f	6.3	6.3
	g	8	8
	h	259	274
	M	1x25 and 1x32	1x25 and 1x32
	M*	2x25	2x25
Max. cable diam. (mm)		25	25
Terminal for cond. cross section (mm ²) min.-max.		1.5	2.5
		—4	—10