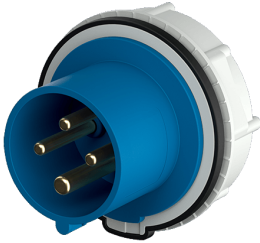


Panel mounted inlet RAPIDO®

Part no. 932

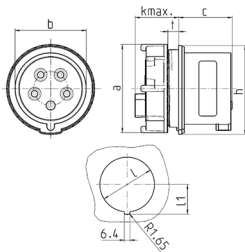


- screw terminals
- for wall aperture 70 mm Ø
- central fixing

Technical specifications

| | |
|---------------------------|-----------------|
| Ampere | 16 A |
| Poles | 4 p |
| Voltage | 230 V |
| Clock position | 9 h |
| Hertz | 50-60 Hz |
| Connection technology | Screw terminals |
| Contact | standard |
| Protection type | IP 44 |
| Weight | 145 g |
| Declaration of Conformity | DE, VDE (ÜG) |

Drawing



| Drawing 2 MB 215 | Amp. Poles | 16 | | 32 | | |
|--------------------------------------|---------------|------------------------|-------|------------------------|-------|-------|
| | | 4 | 5 | 3 | 4 | 5 |
| Dim. in mm | a | 78 | 78 | 78 | 78 | 78 |
| | b | 50 | 56 | 58 | 58 | 64 |
| | c | 45 | 44 | 51 | 51 | 51 |
| | k max. | 33 | 33 | 33 | 33 | 33 |
| | h | 82 | 82 | 82 | 82 | 82 |
| | l | 70 | 70 | 70 | 70 | 70 |
| | l1 | 37.75 | 37.75 | 37.75 | 37.75 | 37.75 |
| | f | wall thicknesses 2-9mm | | wall thicknesses 2-9mm | | |
| Terminal for cond. cross | | 1.5 | 1.5 | 2.5 | 2.5 | 2.5 |
| section (mm ²) min.-max. | | —4 | —4 | —10 | —10 | —10 |