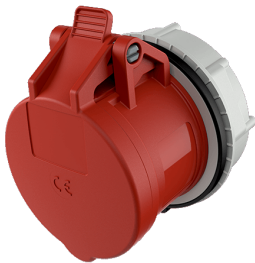


**Panel mounted receptacle RAPIDO® with TwinCONTACT**

Part no. 998

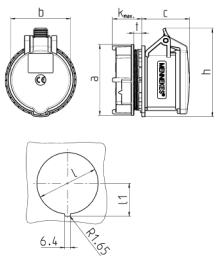


- screwless spring terminals
- suitable for through wiring
- for wall apertures 70 mm diameter
- central fixing

**Technical specifications**

Ampere	16 A
Poles	4 p
Voltage	400 V
Clock position	6 h
Hertz	50-60 Hz
Connection technology	Screwless - TwinCONTACT
Contact	standard
Protection type	IP 44
Weight	42 g

**Drawing**



Drawing 1 MB 468	Amp. Poles	16		32		
		4	5	3	4	5
Dim. in mm	a	81	81	81	81	81
	b	66	69	71	71	80
	c	58	55	66	66	64
	k	max. 33	max. 33	max. 33	max. 33	max. 33
	h	100	102	101	101	108
	l	70	70	70	70	70
	lt	37.75	37.75	37.75	37.75	37.75
	t	2-9	2-9	2-9	2-9	2-9
	Terminal for cond. cross section (mm <sup>2</sup> ) min.-max.	1.5	1.5	2.5	2.5	2.5
		-4	-4	-6	-6	-6