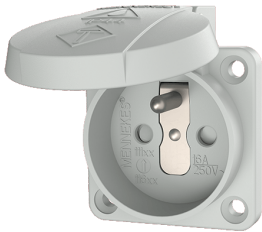


Grounding-type panel mounted receptacle

Part no. 11160

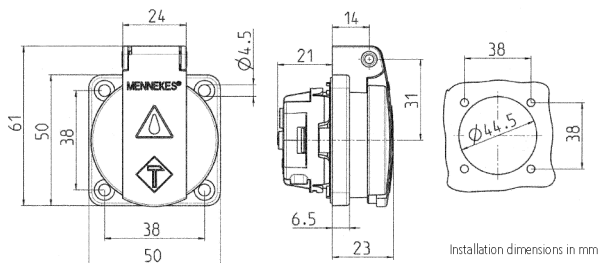


- French-belgian standard
- with hinged lid
- 3 plug-in terminals as connecting terminals for 1.5 - 2.5 mm²
- other colours on request

Technical specifications

| | |
|-----------------------|-------------------|
| Ampere | 16 A |
| Poles | 2 p+E |
| Voltage | 230 V |
| Connection technology | Plug-in terminals |
| Contact | standard |
| Protection type | IP 44 |
| Flange | 50x50 mm |
| Fixing hole | 38x38 mm |
| Weight | 43 g |

Drawing



Drawing
1 MB 410

Dim. in mm

Installation dimensions in mm