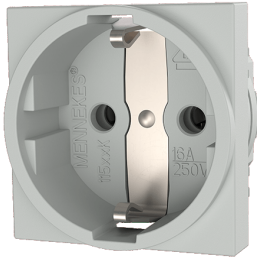


Snap-in receptacle SCHUKO®

Part no. 11510K

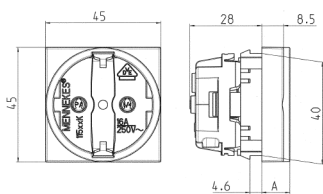


- without hinged lid
- with 3 plug-in terminals for connection of 1.5 – 2.5 mm²
- for easy installation in a cable duct or an enclosure
- for fixing on DIN rail with fixing rack 11254

Technical specifications

Ampere	16 A
Poles	3 p+E
Voltage	230 V
Connection technology	Plug-in terminals
Contact	standard
Protection type	IP 20
Flange	45x45 mm
Weight	32 g
Declaration of Conformity	DE, VDE, RU, EAC (Zwangszulassung)

Drawing



Drawing	Dim. A
1 MB 457	
Drawing in mm	
SCHUKO	11.0
French/Belgian standards	8.5
Danish standards	8.5