

Wall mounted receptacle with TwinCONTACT

Part no. 1727

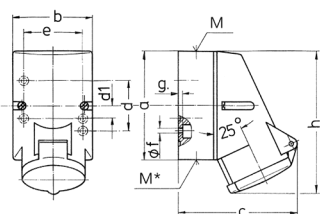


- screwless spring terminals
- suitable for through wiring
- internal fixing
- 4 p and 5 p receptacles the enclosure can be turned 180°

Technical specifications

| | |
|-----------------------|-------------------------|
| Ampere | 16 A |
| Poles | 4 p |
| Voltage | 50-500 V |
| Clock position | 2 h |
| Hertz | 300-500 Hz |
| Connection technology | Screwless - TwinCONTACT |
| Contact | standard |
| Protection type | IP 44 |
| Weight | 220 g |

Drawing



| Drawing 1 MB 209 | Amp. Poles | 16 | | |
|--------------------------------------------------------------|---------------|---------------------------|-----|-----|
| | | 3 | 4 | 5 |
| Dim. in mm | a | 87 | 100 | 100 |
| | b | 64 | 75 | 75 |
| | c | 99 | 110 | 113 |
| | d | 40 | - | - |
| | d1 | - | 11 | 11 |
| | e | 50 | 59 | 59 |
| | f | 4.5 | 5 | 5 |
| | g | 4 | 4 | 4 |
| | h | 115 | 125 | 128 |
| | M | 20 | 20 | 20 |
| | M* | M20 (blind) to be cut out | | |
| Max. cable diam. (mm) | | 15 | 15 | 15 |
| Terminal for cond. cross section (mm ²) min-max. | | 1.5 | 1.5 | 1.5 |
| | | -4 | -4 | -4 |