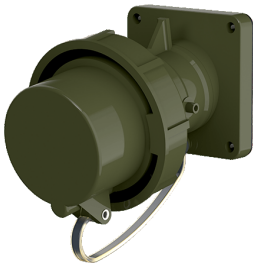


## Panel mounted inlet TM

Part no. 20461

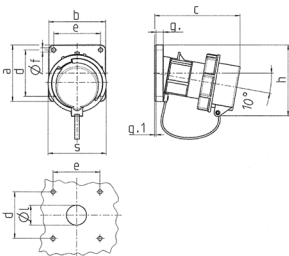


- screw terminals
- highly heat resistant contact carrier
- nickel plated contacts
- with protective cap
- (form BP)

## Technical specifications

Ampere	16 A
Poles	5 p
Voltage	400 V
Clock position	6 h
Hertz	50-60 Hz
Connection technology	Screw terminals
Contact	standard
Protection type	IP 67
Weight	290 g
Declaration of Conformity	DE,VDE

## Drawing



Drawing	Amp.	16			32			63		
		Poles			3	4	5	3	4	5
2 MB 62										
Dim. in mm		a	b	c	d	e	f	g	g.1	h
		85	85	85	85	85	108	108	108	101
		85	85	85	85	85	101	101	101	101
		132	132	131	131	137	164	164	164	164
		70	70	70	70	70	85	85	85	85
		70	70	70	70	70	77	77	77	77
		6.3	6.3	6.3	6.3	6.3	6.5	6.5	6.5	6.5
		11	11	11	11	11	12	12	12	12
		2	2	2	2	2	2	2	2	2
		100	107	108	108	111	130	130	130	130
		70	87	94	94	102	114	114	114	114
		30	30	30	30	30	40	40	40	40
Terminal for cond. cross		1	1	2,5	2,5	2,5	6	6	6	6
section (mm <sup>2</sup> ) min.-max.		-2,5	-2,5	-6	-6	-6	-16	-16	-16	-16