

Wall mounted receptacle

Part no. 2152

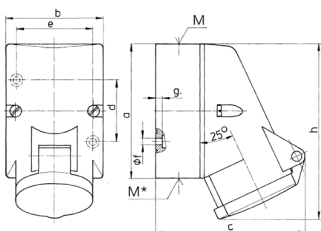


- screw terminals
- internal fixing
- one cable entry at top and one blind cable entry (can be cut out) at bottom

Technical specifications

Ampere	16 A
Poles	3 p
Voltage	50-250 V
Clock position	3 h
Connection technology	Screw terminals
Contact	standard
Protection type	IP 44
Weight	180 g

Drawing



Drawing	Amp.	16
1 MB 369	Poles	3
Dim. in mm	a	87
	b	64
	c	99
	d	40
	e	50
	f	4.5
	g	4
	h	115
	M	20
	M*	20 (blind) to be cut out
	Max. cable diam. (mm)	15
	Terminal for cond. cross section (mm ²) min.-max.	1.5
		-4