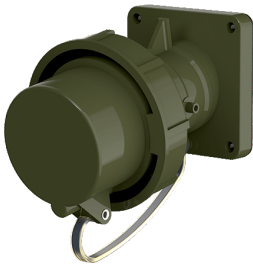


Panel mounted inlet TM

Part no. 23249

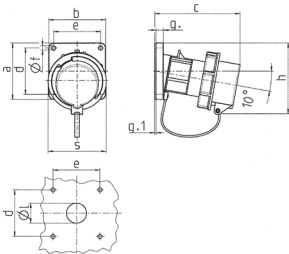


- screw terminals
- highly heat resistant contact carrier
- nickel plated contacts
- with protective cap
- (form BP)

Technical specifications

| | |
|---------------------------|---|
| Ampere | 32 A |
| Poles | 3 p |
| Voltage | 230 V |
| Clock position | 6 h |
| Hertz | 50-60 Hz |
| Connection technology | Screw terminals |
| Contact | nickel plated contacts, highly heat resistant contact carrier |
| Protection type | IP 67 |
| Weight | 314 g |
| Declaration of Conformity | DE,VDE |

Drawing



| Drawing | Amp. | 16 | | | 32 | | | 63 | | |
|---|------|-------|------|-----|-----|-----|-----|-----|-----|---|
| | | Poles | | | 3 | 4 | 5 | 3 | 4 | 5 |
| 2 MB 62 | | | | | | | | | | |
| Dim. in mm | | | | | | | | | | |
| a | | 85 | 85 | 85 | 85 | 85 | 108 | 108 | 108 | |
| b | | 85 | 85 | 85 | 85 | 85 | 101 | 101 | 101 | |
| c | | 132 | 132 | 131 | 131 | 137 | 164 | 164 | 164 | |
| d | | 70 | 70 | 70 | 70 | 70 | 85 | 85 | 85 | |
| e | | 70 | 70 | 70 | 70 | 70 | 77 | 77 | 77 | |
| f | | 6.3 | 6.3 | 6.3 | 6.3 | 6.3 | 6.5 | 6.5 | 6.5 | |
| g. | | 11 | 11 | 11 | 11 | 11 | 12 | 12 | 12 | |
| g.1 | | 2 | 2 | 2 | 2 | 2 | 2 | 2 | 2 | |
| h | | 100 | 107 | 108 | 108 | 111 | 130 | 130 | 130 | |
| s | | 70 | 87 | 94 | 94 | 102 | 114 | 114 | 114 | |
| l | | 30 | 30 | 30 | 30 | 30 | 40 | 40 | 40 | |
| Terminal for cond. cross section (mm ²) min.-max. | | 1 | 1 | 2,5 | 2,5 | 2,5 | 6 | 6 | 6 | |
| | | -2,5 | -2,5 | -6 | -6 | -6 | -16 | -16 | -16 | |