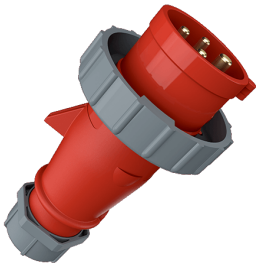


## Plug AM-TOP®

Part no. 294

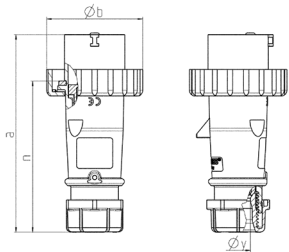


- screw terminals
- single part body
- cable gland and sealing
- strain relief and protection against kinking

## Technical specifications

|                           |                  |
|---------------------------|------------------|
| Ampere                    | 32 A             |
| Poles                     | 4 p              |
| Voltage                   | 400 V            |
| Clock position            | 6 h              |
| Hertz                     | 50-60 Hz         |
| Connection technology     | Screw terminals  |
| Contact                   | standard         |
| Protection type           | IP 67            |
| Weight                    | 313 g            |
| Declaration of Conformity | DE, VDE, CN, CQC |

## Drawing



| Drawing<br>2 MB 218                  | Amp.<br>Poles | 16   |      |      | 32  |     |     |
|--------------------------------------|---------------|------|------|------|-----|-----|-----|
|                                      |               | 3    | 4    | 5    | 3   | 4   | 5   |
| Dim. in mm                           | a             | 142  | 144  | 147  | 186 | 186 | 180 |
|                                      | b             | 70   | 78   | 87   | 94  | 94  | 101 |
|                                      | n             | 109  | 111  | 114  | 145 | 145 | 138 |
|                                      | y             | 14.5 | 16   | 16   | 22  | 22  | 22  |
| Terminal for cond. cross             |               | 1    | 1    | 1    | 2.5 | 2.5 | 2.5 |
| section (mm <sup>2</sup> ) min.-max. |               | -2.5 | -2.5 | -2.5 | -6  | -6  | -6  |