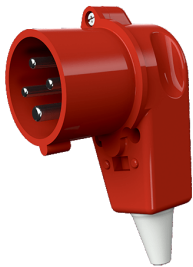


Angled plug

Part no. 315

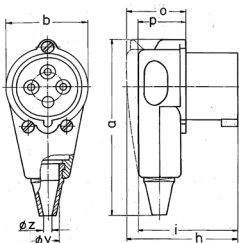


- screw terminals
- nickel plated contacts
- with grommet
- especially suited for use with receptacles of the Cepex range

Technical specifications

Ampere	16 A
Poles	4 p
Voltage	400 V
Clock position	6 h
Hertz	50-60 Hz
Connection technology	Screw terminals
Contact	nickel plated contacts
Protection type	IP 44
Weight	138 g
Declaration of Conformity	CN,CQC

Drawing



2 MB 45	Amp.	16
	Poles	4
Dim. in mm	a	129
	b	58
	h	—
	i	71
	o	—
	p	35
	y	17.5
	z	7
	Terminal for cond. cross section (mm ²) min.-max.	1 —2.5