

Wall mounted receptacle

Part no. 5608A

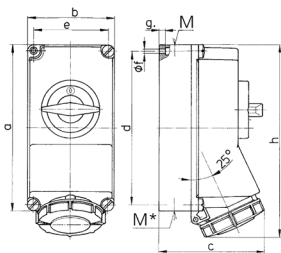


- screw terminals
- switched
- mechanical DUO-interlock
- receptacles can be padlocked

Technical specifications

Ampere	32 A
Poles	5 p
Voltage	400 V
Clock position	6 h
Hertz	50-60 Hz
Connection technology	Screw terminals
Contact	standard
Protection type	IP 67
Enclosure material	Plastic
Weight	1260 g
Declaration of Conformity	DE, VDE, CN, CQC

Drawing



Drawing 1 MB 207	Amp. Poles	16			32		
		3	4	5	3	4	5
Dim. in mm	a	225	225	225	225	225	225
	b	118	118	118	118	118	118
	c	144	146	147	152	152	153
	d	208	208	208	208	208	208
	e	101	101	101	101	101	101
	f	6.3	6.3	6.3	6.3	6.3	6.3
	g	8	8	8	8	8	8
	h	252	255	259	268	268	274
	M	1xM25 and 1xM32			1xM25 and 1xM32		
	M*	2x25	2x25	2x25	2x25	2x25	2x25
	Max. cable diam. (mm)	25	25	25	25	25	25
	Terminal for cond. cross	1.5	1.5	1.5	2.5	2.5	2.5
	section (mm ²) min.-max.	-4	-4	-4	-10	-10	-10