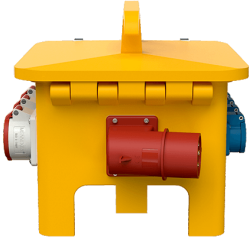


EverGUM receptacle combination

Part no. 70449

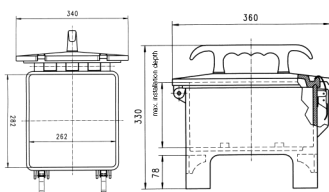


- solid rubber enclosure, signal yellow RAL 1003
- pre-wired for installation

Technical specifications

CEE 32 A, 5 p, 400 V	1
CEE 16 A, 5 p, 400 V	1
SCHUKO® 16 A, 230 V	8
Fusing	<ul style="list-style-type: none"> • 1 RCD 40 A, 4 p, 0.03 A • 1 MCB 16 A, 3 p, C • 4 MCB's 16 A, 1 p, B
Pre-fuse max.	32 A
InA	32 A
RDF	0.9
Connection / feeder cable	<ul style="list-style-type: none"> • 1 inlet 32 A, 5 p, 400 V
Protection type	IP 44
Enclosure material	Solid rubber
Weight	10500 g
Length	360 mm
Height	330 mm
Width	340 mm

Drawing



Drawing
5 MB 43

Dim. in mm