

## EverGUM receptacle combination

Part no. 71062

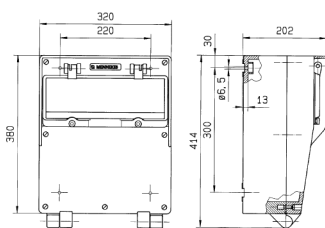


- solid rubber enclosure, signal yellow RAL 1003
- pre-wired for installation

## Technical specifications

CEE 63 A, 5 p, 400 V	1
CEE 32 A, 5 p, 400 V	1
CEE 16 A, 5 p, 400 V	1
SCHUKO® 16 A, 230 V	4
Fusing	<ul style="list-style-type: none"> <li>• 1 MCB 63 A, 3 p, C</li> <li>• 1 MCB 32 A, 3 p, C</li> <li>• 1 MCB 16 A, 3 p, C</li> <li>• 2 MCB's 16 A, 1 p, B</li> </ul>
Pre-fuse max.	63 A
InA	63 A
RDF	0.85
Connection / feeder cable	<ul style="list-style-type: none"> <li>• for 2 cables up to 5 x 25 mm<sup>2</sup></li> </ul>
Protection type	IP 44
Enclosure material	Solid rubber
Weight	13500 g
Height	380 mm
Width	320 mm

## Drawing



Drawing  
5 MB 41

Dim. in mm