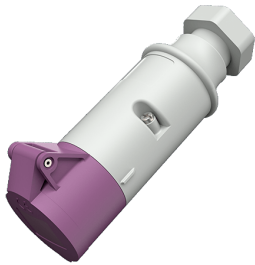


Connector
Part no. 727A

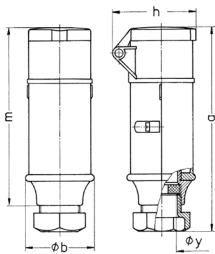


- screw terminals
- with cable gland

Technical specifications

| | |
|-----------------------|-----------------|
| Ampere | 32 A |
| Poles | 3 p |
| Voltage | 20-25 V |
| Hertz | 50-60 Hz |
| Connection technology | Screw terminals |
| Contact | standard |
| Protection type | IP 44 |
| Weight | 227 g |

Drawing



| Drawing 3 MB 36 | Amp. Poles | 16 | | 32 | |
|--------------------------------------|---------------|------|------|------|------|
| | | 2 | 3 | 2 | 3 |
| Dim. in mm | a | 164 | 164 | 164 | 164 |
| | b | 55 | 55 | 55 | 55 |
| | h | 67 | 67 | 67 | 67 |
| | m | 142 | 142 | 142 | 142 |
| | y | 24.7 | 24.7 | 24.7 | 24.7 |
| Terminal for cond. cross | | 4 | 4 | 4 | 4 |
| section (mm ²) min.-max. | | —10 | —10 | —10 | —10 |