

Wall mounted receptacle

Part no. 7307

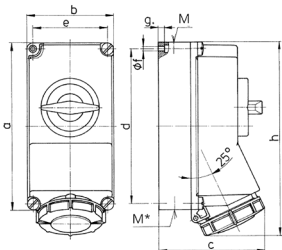


- screw terminals
- switched
- mechanical DUO-interlock
- highly heat resistant contact carrier
- nickel plated contacts
- 6 pole switch with 2 auxiliary contacts (1 NO and 1 NC)
- receptacles can be padlocked

Technical specifications

Ampere	32 A
Poles	7 p
Voltage	400 V
Clock position	6 h
Hertz	50-60 Hz
Connection technology	Screw terminals
Contact	standard
Protection type	IP 67
Enclosure material	Plastic
Weight	1625 g

Drawing



Drawing 1 MB 382	Amp. Poles	16		32	
		7		7	
Dim. in mm	a	225	225	225	225
	b	118	118	118	118
	c	147	153	147	153
	d	208	208	208	208
	e	101	101	101	101
	f	6.3	6.3	6.3	6.3
	g	8	8	8	8
	h	259	274	259	274
	M	1x25 and 1x32	1x25 and 1x32	1x25 and 1x32	1x25 and 1x32
	M*	2x25	2x25	2x25	2x25
Max. cable diam. (mm)	25	25	25	25	
Terminal for cond. cross section (mm ²) min.-max.	1.5	2.5	1.5	2.5	
	—4	—10	—4	—10	