

## Wall mounted receptacle

Part no. 75031

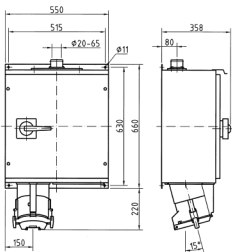


- screw terminals
- switched
- mechanical interlock
- cable entry bushing for cables of up to 65 mm at top and blind flange at bottom
- enclosure made of sheet steel, painted in RAL 1021
- seawater resistant products are available on request

## Technical specifications

|                       |                 |
|-----------------------|-----------------|
| Ampere                | 250 A           |
| Poles                 | 4 p             |
| Voltage               | 400 V           |
| Clock position        | 6 h             |
| Hertz                 | 50-60 Hz        |
| Connection technology | Screw terminals |
| Contact               | standard        |
| Protection type       | IP 55           |
| Weight                | 44440 g         |

## Drawing



Drawing  
1 MB 403/2  
Dim. in mm