

## Wall mounted receptacle

Part no. 1140A

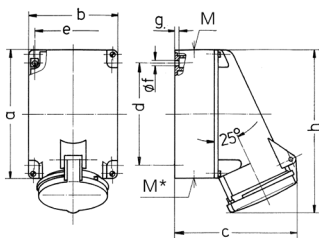


- screw terminals
- X-CONTACT®
- suitable for through wiring
- internal fixing
- enclosure base can be turned 180°
- with 6 fixing points to accommodate special terminals
- products with pilot contacts on request

## Technical specifications

|                           |  |
|---------------------------|--|
| Ampere                    | 63 A                                     |
| Poles                     | 4 p                                      |
| Voltage                   | 230 V                                    |
| Clock position            | 9 h                                      |
| Hertz                     | 50-60 Hz                                 |
| Connection technology     | Screw terminals                          |
| Contact                   | X-CONTACT®                               |
| Protection type           | IP 44                                    |
| Weight                    | 896 g                                    |
| Declaration of Conformity | DE,VDE, RU,EAC (Zwangszulassung), CN,CQC |

## Drawing



| Drawing<br>1 MB 213 | Amp.<br>Poles                                    | 63                          |       |       |
|---------------------|--|-----------------------------|-------|-------|
|                     |  | 3                           | 4     | 5     |
| Dim. in mm          | a  | 170                         | 170   | 170   |
|                     | b  | 118                         | 118   | 118   |
|                     | c  | 164                         | 164   | 164   |
|                     | d  | 134.5                       | 134.5 | 134.5 |
|                     | e  | 103                         | 103   | 103   |
|                     | f  | 6.1                         | 6.1   | 6.1   |
|                     | g  | 6                           | 6     | 6     |
|                     | h  | 216                         | 216   | 216   |
|                     | M  | 40                          | 40    | 40    |
|                     | M*   | 2xM40 (blind) to be cut out |       |       |
|                     | Max. cable diam. (mm)                            | 32                          | 32    | 32    |
|                     | Terminal for cond. cross section (mm²) min.-max. | 6                           | 6     | 6     |
|                     |  | -25                         | -25   | -25   |