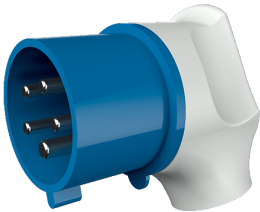


**Angled plug**  
Part no. 3424

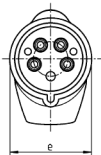
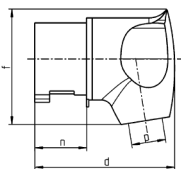


- screw terminals
- nickel plated contacts
- with grommet
- especially suited for use with receptacles of the Cepex range

**Technical specifications**

|                       |                        |
|-----------------------|------------------------|
| Ampere                | 32 A                   |
| Poles                 | 5 p                    |
| Voltage               | 230 V                  |
| Clock position        | 9 h                    |
| Hertz                 | 50-60 Hz               |
| Connection technology | Screw terminals        |
| Contact               | nickel plated contacts |
| Protection type       | IP 44                  |
| Weight                | 260 g                  |

**Drawing**



| 2 MB 251   | Amp. | 32    |       |       |
|------------|------|-------|-------|-------|
|            |      | Poles | 3     | 4     |
| Dim. in mm | d    | 115   | 115   | 115   |
|            | e    | 72    | 72    | 72    |
|            | f    | 96    | 96    | 100   |
|            | n    | 45.8  | 45.8  | 45.8  |
|            | p    | 11/22 | 11/22 | 11/22 |