

## Wall mounted receptacle

Part no. 1842

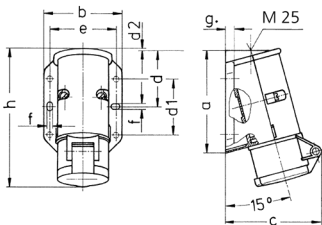


- screw terminals
- external fixing
- one cable entry at top and one blind cable entry (can be cut out) at the rear side

## Technical specifications

Ampere	32 A
Poles	2 p
Voltage	50 V
Clock position	10 h
Connection technology	Screw terminals
Contact	standard
Protection type	IP 44
Weight	189 g
Declaration of Conformity	CN,CQC

## Drawing



Drawing 1 MB 294	Amp. Poles	16		32	
		2	3	2	3
Dim. in mm	a	96	96	96	96
	b	73	73	73	73
	c	90	90	90	90
	d	53	53	53	53
	d1	52	52	52	52
	d2	2	2	2	2
	e	62	62	62	62
	f	5.3	5.3	5.3	5.3
	g	8	8	8	8
	h	129	129	129	129
Terminal for cond. cross section (mm <sup>2</sup> ) min.-max.		4	4	4	4
		-10	-10	-10	-10