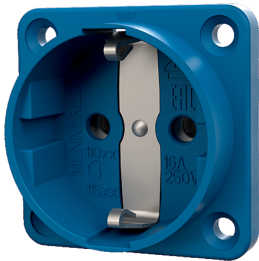


## Panel mounted receptacle SCHUKO®

Part no. 11511

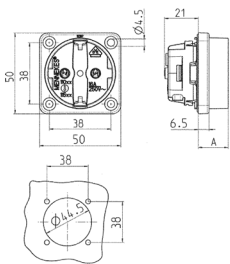


- without hinged lid
- 3 plug-in terminals as connecting terminals for 1.5 – 2.5 mm<sup>2</sup>
- other colours on request

### Technical specifications

|                           |                   |
|---------------------------|-------------------|
| Ampere                    | 16 A              |
| Poles                     | 2 p+E             |
| Voltage                   | 230 V             |
| Connection technology     | Plug-in terminals |
| Contact                   | standard          |
| Protection type           | IP 20             |
| Shutter                   | false             |
| Flange                    | 50x50 mm          |
| Fixing hole               | 38x38 mm          |
| Weight                    | 31 g              |
| Declaration of Conformity | DE, VDE, NL, Kema |

### Drawing



| Drawing<br>1 MB 450<br>Dim. in mm | Dim. A |
|-----------------------------------|--------|
| SCHUKO                            | 18.3   |
| French/Belgian standards          | 15.8   |
| Danish standards                  | 15.8   |