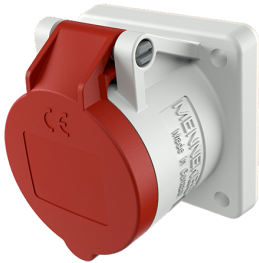


## Panel mounted receptacle with TwinCONTACT

Part no. 1351

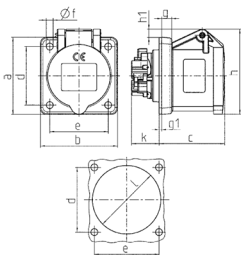


- screwless spring terminals
- suitable for through wiring
- straight

### Technical specifications

|                       |                         |
|-----------------------|-------------------------|
| Ampere                | 16 A                    |
| Poles                 | 3 p                     |
| Voltage               | 400 V                   |
| Clock position        | 9 h                     |
| Hertz                 | 50-60 Hz                |
| Connection technology | Screwless - TwinCONTACT |
| Contact               | standard                |
| Protection type       | IP 44                   |
| Flange                | 62x62 mm                |
| Fixing hole           | 47x47 mm                |
| Weight                | 102 g                   |

### Drawing



| Drawing<br>1 MB 649                                              | Amp.<br>Poles | 16  |     |     |
|------------------------------------------------------------------|---------------|-----|-----|-----|
|                                                                  |               | 3   | 4   | 5   |
| Dim. in mm                                                       | a             | 62  | 72  | 72  |
|                                                                  | b             | 62  | 65  | 65  |
|                                                                  | c             | 54  | 54  | 54  |
|                                                                  | d             | 47  | 52  | 52  |
|                                                                  | e             | 47  | 52  | 52  |
|                                                                  | f             | 5,5 | 5,5 | 5,5 |
|                                                                  | g             | 8   | 8   | 8   |
|                                                                  | g1            | 2   | 2   | 2   |
|                                                                  | h             | 68  | 77  | 85  |
|                                                                  | h1            | 7   | 7   | 11  |
|                                                                  | k             | 23  | 23  | 23  |
|                                                                  | l             | 50  | 52  | 57  |
| Terminal for cond. cross<br>section (mm <sup>2</sup> ) min.-max. |               | 1,5 | 1,5 | 1,5 |
|                                                                  |               | -4  | -4  | -4  |