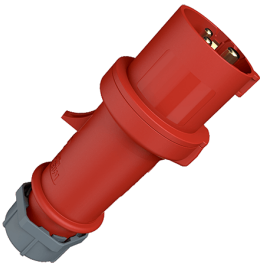


**Plug ProTOP**  
Part no. 149A

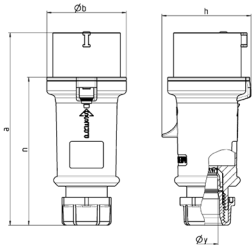


- screw terminals
- cable gland and sealing
- strain relief and protection against kinking
- enclosure with thread lock and safety slide

**Technical specifications**

|                           |                 |
|---------------------------|-----------------|
| Ampere                    | 16 A            |
| Poles                     | 3 p             |
| Voltage                   | 400 V           |
| Clock position            | 9 h             |
| Hertz                     | 50-60 Hz        |
| Connection technology     | Screw terminals |
| Contact                   | standard        |
| Protection type           | IP 44           |
| Weight                    | 120 g           |
| Declaration of Conformity | DE,VDE          |

**Drawing**



| Drawing<br>2 MB 214                  | Amp.<br>Poles | 16   |       |       | 32   |      |     |
|--------------------------------------|---------------|------|-------|-------|------|------|-----|
|                                      |               | 3    | 4     | 5     | 3    | 4    | 5   |
| Dim. in mm                           | a             | 148  | 160   | 160   | 197  | 197  | 197 |
|                                      | b             | 55   | 65.6  | 65.6  | 75   | 75   | 75  |
|                                      | h             | 61   | 72.5  | 72.5  | 80.5 | 80.5 | 85  |
|                                      | n             | 112  | 123.5 | 123.5 | 152  | 152  | 152 |
|                                      | y             | 14.5 | 16    | 16    | 22   | 22   | 22  |
| Terminal for cond. cross             |               | 1    | 1     | 1     | 2.5  | 2.5  | 2.5 |
| section (mm <sup>2</sup> ) min.-max. |               | -2.5 | -2.5  | -2.5  | -6   | -6   | -6  |