

Panel mounted receptacle

Part no. 1629ZC

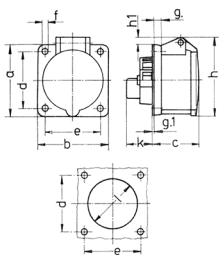


- screw terminals straight

Technical specifications

Ampere	16 A
Poles	3 p
Voltage	230 V
Clock position	6 h
Hertz	50-60 Hz
Connection technology	Screw terminals
Contact	standard
Protection type	IP 44
Flange	55x55 mm
Fixing hole	45x45 mm
Weight	119 g

Drawing



Drawing	Amp.	16
1 MB 426	Poles	3
Dim. in mm	a	55
	b	55
	c	54
	d	45
	e	45
	f	5,5
	g	8
	g-1	2
	h	70
	h1	12
	k	28
	l	47
Terminal for cond. cross section (mm ²) min.-max.		1,5 —4