

Panel mounted receptacle TM

Part no. 24643

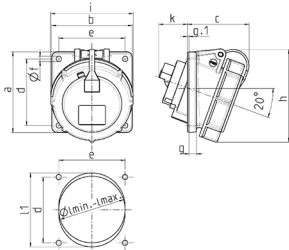


- screw terminals
- highly heat resistant contact carrier
- nickel plated contacts
- 20° inclination
- (form BS)

Technical specifications

Ampere	16 A
Poles	5 p
Voltage	50-500 V
Clock position	2 h
Hertz	300-500 Hz
Connection technology	Screw terminals
Contact	highly heat resistant contact carrier, nickel plated contacts
Protection type	IP 67
Flange	85x85 mm
Fixing hole	70x70 mm
Inclination	20 °
Weight	235 g

Drawing



Drawing 1MB474	Amp. Pole	16		32		63
		3	5	3/4	5	3/4/5
Dim. in mm	a	85	85	85	85	114
	b	85	85	85	85	114
	c	71	65	65	60	98
	d	70	70	70	70	90
	e	70	70	70	70	90
	f	5.5	5.5	5.5	5.5	5.5
	g	8	8	8	8	12
	g.1	2	2	2	2	2
	h	92	98	101	115	135
	i	70	87	94	101	112
	k	39	33	53	53	70
	I min.	57	70	78	78	92
	I max.	78	78	78	78	105
	It	—	—	—	—	105
Terminal for cond. cross section (mm²) min.-max.	It	1.5	1.5	2.5	2.5	6
		-4	-4	-10	-10	-25