

Panel mounted inlet

Part no. 2624

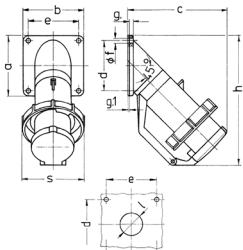


- screw terminals
- with hinged lid

Technical specifications

Ampere	63 A
Poles	4 p
Voltage	500 V
Clock position	7 h
Hertz	50-60 Hz
Connection technology	Screw terminals
Contact	standard
Protection type	IP 67
Weight	748 g
Declaration of Conformity	DE,VDE

Drawing



Drawing	Amp.	16				32		63	
		Poles		3	4	5	4	5	
2 MB 40		5							
Dim. in mm									
a	85	85	85	85	114	114			
b	85	85	85	85	114	114			
c	141	141	141	144	180	180			
d	70	70	70	70	90	90			
e	70	70	70	70	90	90			
f	6.2	6.2	6.2	6.2	6.2	6.2			
g	6	6	6	6	6	6			
g.1	2	2	2	2	2	2			
h	181	181	181	188	242	242			
s	86	93	93	100	113	113			
l	30	30	30	30	40	40			
Terminal for cond. cross section (mm ²) min.-max.	1	2.5	2.5	2.5	4	4			
		-2.5	-6	-6	-6	-16	-16		