

Panel mounted receptacle

Part no. 3787P

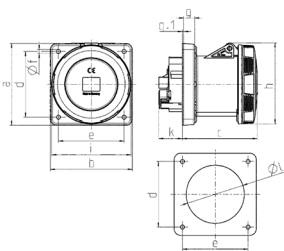


- screw terminals
- with pilot contact
- X-CONTACT®
- highly heat resistant contact carrier
- straight

Technical specifications

Ampere	125 A
Poles	5 p
Voltage	600-690 V
Clock position	5 h
Hertz	50-60 Hz
Connection technology	Screw terminals
Contact	highly heat resistant contact carrier, X-CONTACT®
Protection type	IP 67
Flange	130x130 mm
Fixing hole	104x104 mm
Weight	1329 g

Drawing



Drawing 1 MB 258 Dim. in mm	Amp. Poles	125	
		4	5
a		130	130
b		130	130
c		119	119
d		104	104
e		104	104
f		6,5	6,5
g		18	18
g.1		2	2
h		129	129
i		126	126
k		43	43
l		95	95
Terminal for cond. cross section (mm ²) min.-max.		25	25
		-70	-70