

## EverGUM receptacle combination

Part no. 70444

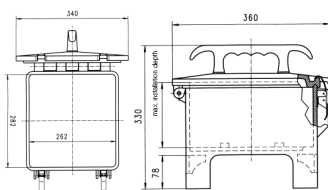


- solid rubber enclosure, signal yellow RAL 1003
- pre-wired for installation

## Technical specifications

CEE 32 A, 5 p, 400 V	2
CEE 16 A, 5 p, 400 V	2
SCHUKO® 16 A, 230 V	4
Fusing	<ul style="list-style-type: none"> <li>• 1 RCD 40 A, 4 p, 0.03 A</li> <li>• 2 MCB's 16 A, 3 p, C</li> <li>• 2 MCB's 16 A, 1 p, B</li> </ul>
Pre-fuse max.	32 A
InA	32 A
RDF	1
Connection / feeder cable	<ul style="list-style-type: none"> <li>• 3 m H07RN-F5G4 with CEE-plug 32 A, 5 p, 400 V</li> </ul>
Protection type	IP 44
Shutter	false
Enclosure material	Solid rubber
Weight	14000 g
Length	360 mm
Height	330 mm
Width	340 mm

## Drawing



Drawing  
5 MB 43

Dim. in mm