

## Panel mounted receptacle

Part no. 740

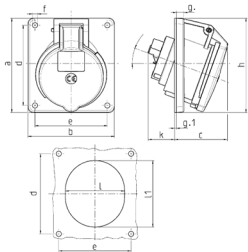


- screw terminals
- highly heat resistant contact carrier
- nickel plated contacts
- 20° inclination
- receptacles optional fitted with auxiliary contact

## Technical specifications

Ampere	32 A
Poles	7 p
Voltage	400 V
Clock position	6 h
Hertz	50-60 Hz
Connection technology	Screw terminals
Contact	highly heat resistant contact carrier, nickel plated contacts
Protection type	IP 44
Flange	100x92 mm
Fixing hole	85x77 mm
Inclination	20 °
Weight	300 g
Declaration of Conformity	CN,CQC

## Drawing



Drawing 1 MB 260	Amp. Poles	16		32	
		7	7	7	7
Dim. in mm	a	100	100	100	100
	b	92	92	92	92
	c	58	61	61	61
	d	85	85	85	85
	e	77	77	77	77
	f	5.5	5.5	5.5	5.5
	g	8	8	8	8
	g-1	2	2	2	2
	h	100	106	106	106
	k	40	55	55	55
	l	65	72	72	72
	l1	72	85	85	85
	α	20°	20°	20°	20°
	Terminal for cond. cross section (mm²) min.-max.	1.5	2.5	2.5	2.5
		-4	-10	-10	-10