

Panel mounted receptacle

Part no. 1495

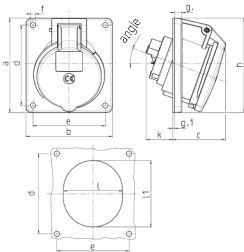


- screw terminals
- 20° inclination
- receptacles optional fitted with auxiliary contact

Technical specifications

Ampere	32 A
Poles	4 p
Voltage	230 V
Clock position	9 h
Hertz	50-60 Hz
Connection technology	Screw terminals
Contact	standard
Protection type	IP 44
Flange	100x92 mm
Fixing hole	85x77 mm
Inclination	20 °
Weight	250 g
Declaration of Conformity	DE, VDE, CN, CQC

Drawing



Drawing 1 MB 260 Dim. in mm	Amp. Poles	16			32		
		3	4	5	3	4	5
a		73.5	100	100	100	100	100
b		64	92	92	92	92	92
c		50	59	58	62	62	61
d		60	85	85	85	85	85
e		52	77	77	77	77	77
f		5.5	5.5	5.5	5.5	5.5	5.5
g		7	8	8	8	8	8
g-1		2	2	2	2	2	2
h		79	100	100	103	103	106
k		44	34	34	54	54	49
l		52	55	65	67	67	72
l1		60	63	72	82	82	85
alpha		20°	20°	20°	20°	20°	20°
Terminal for cond. cross section (mm²) min.-max.		1.5	1.5	1.5	2.5	2.5	2.5
		-4	-4	-4	-10	-10	-10