

Cepex panel mounted receptacle SCHUKO®

Part no. 4974ME

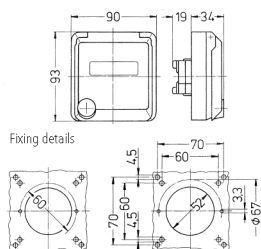


- alpine white or pearl white
- screw terminals
- with labelling field
- suitable for installation in cable ducts and columns

Technical specifications

Ampere	16 A
Poles	2 p+E
Voltage	230 V
Hertz	50-60 Hz
Protection type	IP 44
Shutter	false
Weight	139 g
Declaration of Conformity	RU,EAC (Zwangszulassung)

Drawing



Drawing
1 MB 325
Dim. in mm