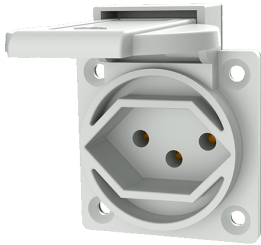


Grounding-type panel mounted receptacle

Part no. 10085

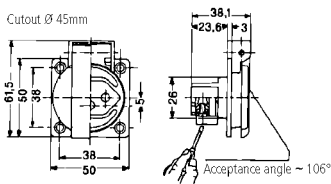


- Swiss standard
- type 13
- with hinged lid
- 3 screw terminals
- receptacle cannot be combined with enclosure base part no. 10714, 10715 or 10716

Technical specifications

Ampere	10 A
Poles	2 p+E
Voltage	230 V
Connection technology	Screw terminals
Contact	standard
Protection type	IP 54
Shutter	false
Flange	50x50 mm
Fixing hole	38x38 mm
Weight	41 g
Declaration of Conformity	EAC

Drawing



Drawing
1 MB 423
Dim. in mm