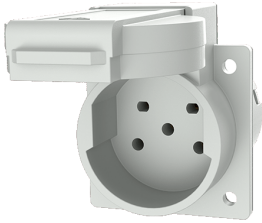


Grounding-type panel mounted receptacle

Part no. 10086

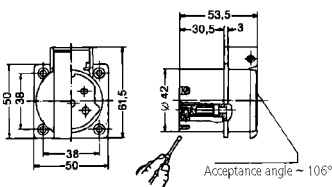


- Swiss standard
- type 15
- with hinged lid
- 5 screw terminals
- receptacle cannot be combined with enclosure base part no. 10714, 10715 or 10716

Technical specifications

| | |
|---------------------------|-----------------|
| Ampere | 10 A |
| Poles | 5 p |
| Voltage | 400 V |
| Connection technology | Screw terminals |
| Contact | standard |
| Protection type | IP 54 |
| Shutter | false |
| Flange | 50x50 mm |
| Fixing hole | 38x38 mm |
| Weight | 46 g |
| Declaration of Conformity | EAC |

Drawing



Drawing
1 MB 424
Dim. in mm