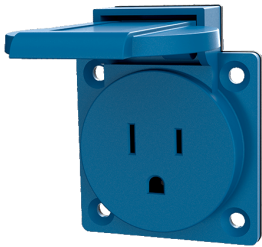


Grounding type panel mounted receptacle

Part no. 10087

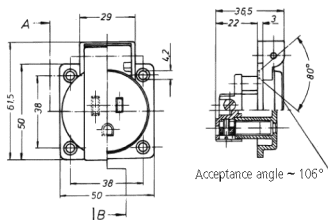


- NEMA for the USA and Canada
- with hinged lid
- with 3 screw terminals
- receptacle cannot be combined with enclosure base part no. 10714, 10715 or 10716

Technical specifications

Ampere	15 A
Poles	3 p+E
Voltage	125 V
Connection technology	Screw terminals
Contact	standard
Protection type	IP 44
Shutter	false
Flange	50x50 mm
Fixing hole	38x38 mm
Weight	45 g
Declaration of Conformity	EAC

Drawing



Drawing
1 MB 421

Dim. in mm

Acceptance angle ~ 106°