

## Panel mounted inlet

Part no. 1075

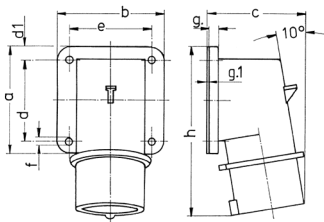


- screw terminals
- highly heat resistant contact carrier
- nickel plated contacts

## Technical specifications

Ampere	16 A
Poles	7 p
Voltage	500 V
Clock position	7 h
Hertz	50-60 Hz
Connection technology	Screw terminals
Contact	nickel plated contacts, highly heat resistant contact carrier
Protection type	IP 44
Weight	204 g
Declaration of Conformity	EAC, CQC

## Drawing



Drawing	Amp.	16	32
2 MB 71	Poles	7	7
Dim. in mm	a	85	75
	b	85	90
	c	79	90
	d	64	45
	d1	10	13
	e	64	78
	f	5.5	5.5
	g-	6	6
	g.1	2	2
	h	129	138
Terminal for cond. cross		1	2.5
section (mm <sup>2</sup> ) min.-max.		-2.5	-6