

Panel mounted receptacle

Part no. 1095

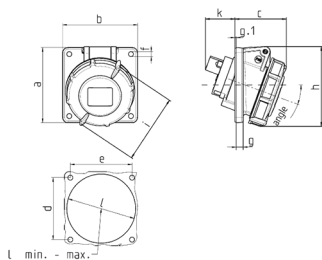


- screw terminals
- highly heat resistant contact carrier
- nickel plated contacts
- uniform fixing hole spacing
- suitable for through wiring
- 20° inclination
- receptacles are designed for adding an auxiliary contact switch

Technical specifications

| | |
|---------------------------|-----------------|
| Ampere | 16 A |
| Poles | 7 p |
| Voltage | 230 V |
| Clock position | 9 h |
| Hertz | 50-60 Hz |
| Connection technology | Screw terminals |
| Contact | standard |
| Protection type | IP 67 |
| Flange | 85x85 mm |
| Fixing hole | 70x70 mm |
| Inclination | 20 ° |
| Weight | 246 g |
| Declaration of Conformity | EAC |

Drawing



| Drawing | Amp. | 16 | 32 |
|---|--------|-----|-----|
| 1 MB 452 | Poles | 7 | 7 |
| Dim. in mm | a | 85 | 85 |
| | b | 85 | 85 |
| | c | 60 | 72 |
| | d | 70 | 70 |
| | e | 70 | 70 |
| | f | 5.5 | 5.5 |
| | g | 8 | 8 |
| | g-1 | 2 | 2 |
| | h | 99 | 110 |
| | i | 96 | 110 |
| | k | 41 | 49 |
| | l min. | 70 | 78 |
| | l max. | 78 | 78 |
| Terminal for cond. cross section (mm ²) min.-max. | | 1.5 | 2.5 |
| | | -4 | -10 |