

Panel mounted receptacle SCHUKO®

Part no. 11033

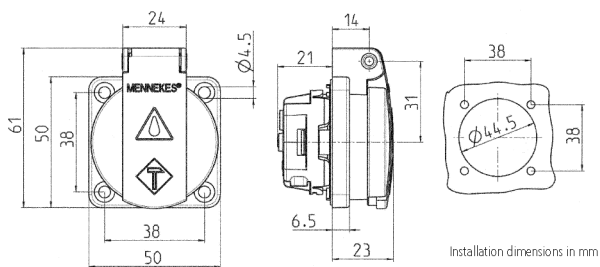


- for stationary use
- with hinged lid
- 3 screw terminals as connecting terminals for 1.5 – 2.5 mm²

Technical specifications

Ampere	16 A
Poles	2 p+E
Voltage	230 V
Connection technology	Screw terminals
Contact	standard
Protection type	IP 54
Shutter	false
Flange	50x50 mm
Fixing hole	38x38 mm
Weight	41 g
Declaration of Conformity	VDE, EAC, Kema

Drawing



Drawing
1 MB 410
Dim. in mm