

Panel mounted receptacle

Part no. 1123A

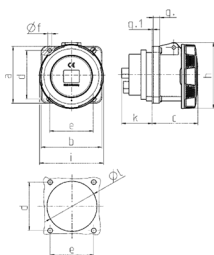


- screw terminals
- X-CONTACT®
- straight
- receptacles with pilot contact: part no. + index P

Technical specifications

Ampere	63 A
Poles	4 p
Voltage	230 V
Clock position	9 h
Hertz	50-60 Hz
Connection technology	Screw terminals
Contact	X-CONTACT®
Protection type	IP 67
Flange	107x100 mm
Fixing hole	85x77 mm
Weight	604 g
Declaration of Conformity	VDE, EAC, CQC

Drawing



Drawing 1 MB 212/258	Amp. Poles	63			125	
		3	4	5	4	5
Dim. in mm	a	107	107	107	130	130
	b	100	100	100	130	130
	c	81	81	81	119	119
	d	85	85	85	104	104
	e	77	77	77	104	104
	f	6	6	6	6.5	6.5
	g	12	12	12	18	18
	g.1	2	2	2	2	2
	h	117	117	117	129	129
	i	113	113	113	126	126
	k	55	55	55	43	43
	l	88	88	88	95	95
Terminal for cond. cross		6	6	6	25	25
section (mm ²) min.-max.		-25	-25	-25	-70	-70