

## Panel mounted receptacle

Part no. 1127A

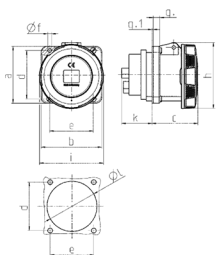


- screw terminals
- X-CONTACT®
- straight
- receptacles with pilot contact: part no. + index P

## Technical specifications

|                           |                 |
|---------------------------|-----------------|
| Ampere                    | 63 A            |
| Poles                     | 5 p             |
| Voltage                   | 230 V           |
| Clock position            | 9 h             |
| Hertz                     | 50-60 Hz        |
| Connection technology     | Screw terminals |
| Contact                   | X-CONTACT®      |
| Protection type           | IP 67           |
| Flange                    | 107x100 mm      |
| Fixing hole               | 85x77 mm        |
| Weight                    | 664 g           |
| Declaration of Conformity | VDE, EAC, CQC   |

## Drawing



| Drawing<br>1 MB 212/258                                       | Amp.<br>Poles | 63  |     |     | 125 |     |
|---|---------------|-----|-----|-----|-----|-----|
|   |               | 3   | 4   | 5   | 4   | 5   |
| Dim. in mm  | a             | 107 | 107 | 107 | 130 | 130 |
|   | b             | 100 | 100 | 100 | 130 | 130 |
|   | c             | 81  | 81  | 81  | 119 | 119 |
|   | d             | 85  | 85  | 85  | 104 | 104 |
|   | e             | 77  | 77  | 77  | 104 | 104 |
|   | f             | 6   | 6   | 6   | 6.5 | 6.5 |
|   | g             | 12  | 12  | 12  | 18  | 18  |
|   | g.1           | 2   | 2   | 2   | 2   | 2   |
|   | h             | 117 | 117 | 117 | 129 | 129 |
|   | i             | 113 | 113 | 113 | 126 | 126 |
|   | k             | 55  | 55  | 55  | 43  | 43  |
|   | l             | 88  | 88  | 88  | 95  | 95  |
| Terminal for cond. cross section (mm <sup>2</sup> ) min.-max. |               | 6   | 6   | 6   | 25  | 25  |
|   |               | -25 | -25 | -25 | -70 | -70 |