

Panel mounted receptacle SCHUKO®

Part no. 11313

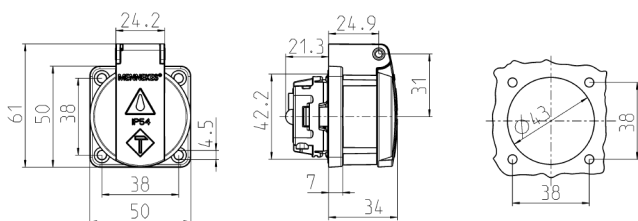


- for portable use
- with front gasket
- with hinged lid
- 3 plug-in terminals as connecting terminals for 1.5 – 2.5 mm²
- other colours on request

Technical specifications

| | |
|---------------------------|-------------------|
| Ampere | 16 A |
| Poles | 2 p+E |
| Voltage | 230 V |
| Connection technology | Plug-in terminals |
| Contact | standard |
| Protection type | IP 54 |
| Shutter | false |
| Flange | 50x50 mm |
| Fixing hole | 38x38 mm |
| Weight | 60 g |
| Declaration of Conformity | VDE, EAC |

Drawing



Drawing
1 MB 5861

Dim. in mm