

Wall mounted receptacle

Part no. 1136A

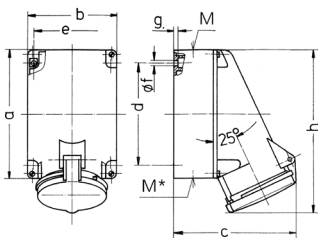


- screw terminals
- X-CONTACT®
- suitable for through wiring
- internal fixing
- enclosure base can be turned 180°
- with 6 fixing points to accommodate special terminals
- products with pilot contacts on request

Technical specifications

| | |
|---------------------------|-----------------|
| Ampere | 63 A |
| Poles | 3 p |
| Voltage | 110 V |
| Clock position | 4 h |
| Hertz | 50-60 Hz |
| Connection technology | Screw terminals |
| Contact | X-CONTACT® |
| Protection type | IP 44 |
| Weight | 859 g |
| Declaration of Conformity | VDE, EAC, CQC |

Drawing



| Drawing 1 MB 213 | Amp. Poles | 63 | | |
|---------------------|--|-----------------------------|-------|-------|
| | | 3 | 4 | 5 |
| Dim. in mm | a | 170 | 170 | 170 |
| | b | 118 | 118 | 118 |
| | c | 164 | 164 | 164 |
| | d | 134.5 | 134.5 | 134.5 |
| | e | 103 | 103 | 103 |
| | f | 6.1 | 6.1 | 6.1 |
| | g | 6 | 6 | 6 |
| | h | 216 | 216 | 216 |
| | M | 40 | 40 | 40 |
| | M* | 2xM40 (blind) to be cut out | | |
| | Max. cable diam. (mm) | 32 | 32 | 32 |
| | Terminal for cond. cross section (mm²) min.-max. | 6 | 6 | 6 |
| | | -25 | -25 | -25 |