

## Wall mounted receptacle

Part no. 1141A

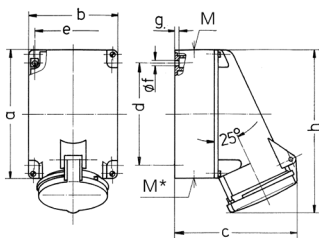


- screw terminals
- X-CONTACT®
- suitable for through wiring
- internal fixing
- enclosure base can be turned 180°
- with 6 fixing points to accommodate special terminals
- products with pilot contacts on request

## Technical specifications

|                           |                 |
|---------------------------|-----------------|
| Ampere                    | 63 A            |
| Poles                     | 4 p             |
| Voltage                   | 400 V           |
| Clock position            | 6 h             |
| Hertz                     | 50-60 Hz        |
| Connection technology     | Screw terminals |
| Contact                   | X-CONTACT®      |
| Protection type           | IP 44           |
| Weight                    | 896 g           |
| Declaration of Conformity | VDE, EAC, CQC   |

## Drawing



| Drawing<br>1 MB 213 | Amp.<br>Poles                                   | 63                          |       |       |
|---------------------|-------------------------------------------------|-----------------------------|-------|-------|
|                     |                                                 | 3                           | 4     | 5     |
| Dim. in mm          | a                                               | 170                         | 170   | 170   |
|                     | b                                               | 118                         | 118   | 118   |
|                     | c                                               | 164                         | 164   | 164   |
|                     | d                                               | 134.5                       | 134.5 | 134.5 |
|                     | e                                               | 103                         | 103   | 103   |
|                     | f                                               | 6.1                         | 6.1   | 6.1   |
|                     | g                                               | 6                           | 6     | 6     |
|                     | h                                               | 216                         | 216   | 216   |
|                     | M                                               | 40                          | 40    | 40    |
|                     | M*                                              | 2xM40 (blind) to be cut out |       |       |
|                     | Max. cable diam. (mm)                           | 32                          | 32    | 32    |
|                     | Terminal for cond. cross section (mm²) min-max. | 6                           | 6     | 6     |
|                     |                                                 | -25                         | -25   | -25   |