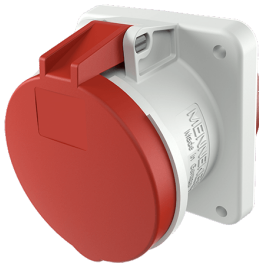


Panel mounted receptacle

Part no. 1262A

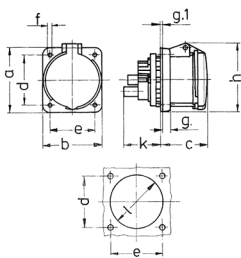


- screw terminals
- X-CONTACT®
- straight
- products with pilot contact on request

Technical specifications

| | |
|---------------------------|-----------------|
| Ampere | 63 A |
| Poles | 3 p |
| Voltage | 400 V |
| Clock position | 9 h |
| Hertz | 50-60 Hz |
| Connection technology | Screw terminals |
| Contact | X-CONTACT® |
| Protection type | IP 44 |
| Flange | 107x100 mm |
| Fixing hole | 85x77 mm |
| Weight | 523 g |
| Declaration of Conformity | EAC, CQC |

Drawing



| Drawing 1 MB 211 | Amp. Poles | 63 | | |
|--|---------------|-------------|-------------|-------------|
| | | 3 | 4 | 5 |
| Dim. in mm | a | 107 | 107 | 107 |
| | b | 100 | 100 | 100 |
| | c | 80 | 80 | 80 |
| | d | 85 | 85 | 85 |
| | e | 77 | 77 | 77 |
| | f | 6 | 6 | 6 |
| | g. | 12 | 12 | 12 |
| | g.1 | 2 | 2 | 2 |
| | h | 113 | 113 | 113 |
| | k | 55 | 55 | 55 |
| | l | 88 | 88 | 88 |
| Terminal for cond. cross section (mm ²) min.-max. | | 6 6 6 | 6 6 6 | 6 6 6 |
| | | -25 -25 -25 | -25 -25 -25 | -25 -25 -25 |