

## Panel mounted receptacle

Part no. 1294

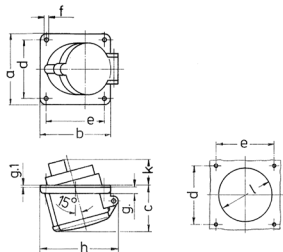


- screw terminals
- for horizontal installation
- 15° inclination

## Technical specifications

|                           |                 |
|---------------------------|-----------------|
| Ampere                    | 32 A            |
| Poles                     | 5 p             |
| Voltage                   | 400 V           |
| Clock position            | 6 h             |
| Hertz                     | 50-60 Hz        |
| Connection technology     | Screw terminals |
| Contact                   | standard        |
| Protection type           | IP 44           |
| Flange                    | 85x85 mm        |
| Fixing hole               | 70x70 mm        |
| Inclination               | 15 °            |
| Weight                    | 251 g           |
| Declaration of Conformity | EAC             |

## Drawing



| Drawing<br>1 MB 230 | Amp.<br>Poles   | 16  |     |     | 32  |     |     |
|---------------------|---|-----|-----|-----|-----|-----|-----|
|                     |   | 3   | 4   | 5   | 3   | 4   | 5   |
| Dim. in mm          | a   | 85  | 85  | 85  | 85  | 85  | 85  |
|                     | b   | 85  | 85  | 85  | 85  | 85  | 85  |
|                     | c   | 55  | 55  | 56  | 60  | 60  | 60  |
|                     | d   | 70  | 70  | 70  | 70  | 70  | 70  |
|                     | e   | 70  | 70  | 70  | 70  | 70  | 70  |
|                     | f   | 5,5 | 5,5 | 5,5 | 5,5 | 5,5 | 5,5 |
|                     | g.  | 8   | 8   | 8   | 8   | 8   | 8   |
|                     | g.1   | 2   | 2   | 2   | 2   | 2   | 2   |
|                     | h   | 88  | 93  | 94  | 96  | 96  | 98  |
|                     | k   | 30  | 30  | 30  | 44  | 44  | 44  |
|                     | l   | 55  | 60  | 70  | 70  | 70  | 76  |
|                     | Terminal for cond. cross section (mm <sup>2</sup> ) min.-max. | 1.5 | 1.5 | 1.5 | 2.5 | 2.5 | 2.5 |
|                     |   | -4  | -4  | -4  | -10 | -10 | -10 |