

## Panel mounted receptacle with TwinCONTACT

Part no. 1352

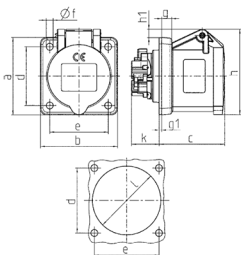


- screwless spring terminals
- suitable for through wiring straight

### Technical specifications

|                           |                         |
|---------------------------|-------------------------|
| Ampere                    | 16 A                    |
| Poles                     | 4 p                     |
| Voltage                   | 230 V                   |
| Clock position            | 9 h                     |
| Hertz                     | 50-60 Hz                |
| Connection technology     | Screwless - TwinCONTACT |
| Contact                   | standard                |
| Protection type           | IP 44                   |
| Flange                    | 72x65 mm                |
| Fixing hole               | 52x52 mm                |
| Weight                    | 250 g                   |
| Declaration of Conformity | VDE, EAC                |

### Drawing



| Drawing<br>1 MB 649  | Amp.<br>Poles | 16          |          |     |
|--|---------------|-------------|----------|-----|
|  |               | 3           | 4        | 5   |
| Dim. in mm   | a             | 62          | 72       | 72  |
|  | b             | 62          | 65       | 65  |
|  | c             | 54          | 54       | 54  |
|  | d             | 47          | 52       | 52  |
|  | e             | 47          | 52       | 52  |
|  | f             | 5.5         | 5.5      | 5.5 |
|  | g             | 8           | 8        | 8   |
|  | g1            | 2           | 2        | 2   |
|  | h             | 68          | 77       | 85  |
|  | h1            | 7           | 7        | 11  |
|  | k             | 23          | 23       | 23  |
|  | l             | 50          | 52       | 57  |
| Terminal for cond. cross<br>section (mm <sup>2</sup> ) min.-max. |               | 1.5 1.5 1.5 | —4 —4 —4 |     |