

## Angled connector

Part no. 1438

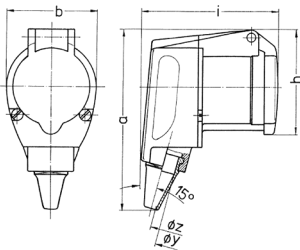


- screw terminals
- with grommet

## Technical specifications

Ampere	16 A
Poles	3 p
Voltage	230 V
Clock position	6 h
Hertz	50-60 Hz
Connection technology	Screw terminals
Contact	standard
Protection type	IP 44
Weight	144 g
Declaration of Conformity	VDE, EAC, CQC

## Drawing



Drawing	Amp.	16
3 MB Z3	Poles	3
Dim. in mm	a	118
	b	59
	h	69
	i	88
	y	17.5
	z	7
Terminal for cond. cross		1
section (mm <sup>2</sup> ) min.-max.		—2.5